

Sigma Drive SD55 service report

Vessel: French Connection

Home Port: Bradwell

Make: Jeanneau

Model: Sun Odyssey 37

Engine: Volvo Penta 2040D (40HP)

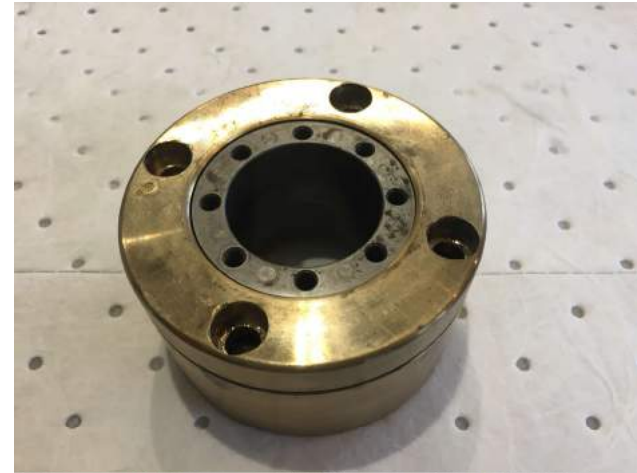
Propeller: SPW vari prop - DF-107-3 Blade

Shaft size: 25mm

Approx hours in service with Sigma drive: 350



Initial Disassembly



Sigma drive stripped down, cleaned and now ready for inspection



A touch condition between the main corp and the central sphere had occurred



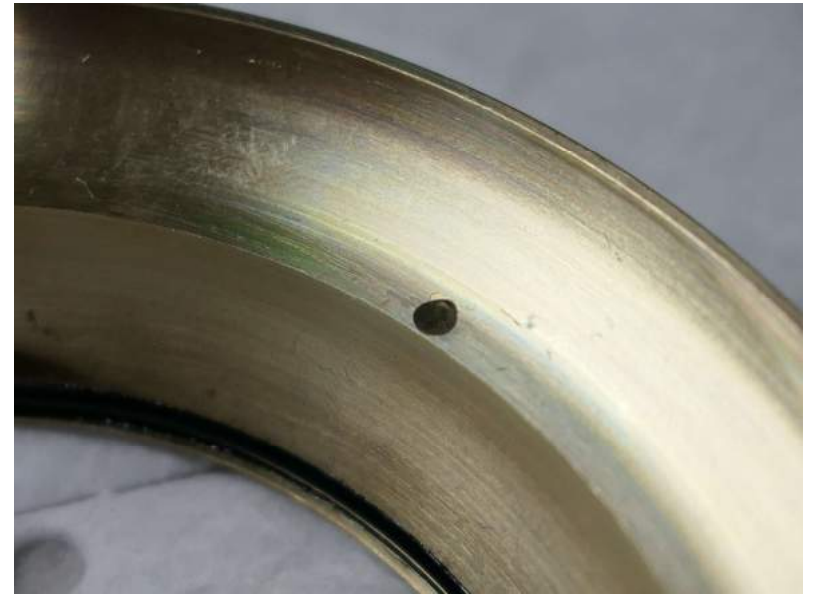
This touch condition
was evident around
Most of the corp and
central sphere



No wear condition found to the ball bearings or bearing wells



Evidence marks of a wear / touch condition between the ball Bearings and the cover



A lot of the touch condition between the main corp and central sphere was superficial. Nearly all of the touch condition marks were easily removed by using a metal polish and a Dremel.

Only very slight pitting remained.



The central sphere also cleaned up with nearly all evidence marks being removed. A “stand alone” buffer wheel was used to achieve this.



The re-assembly

Trouble free with no area's of concern. I was not shy with the grease!

Before closing the joint I did wipe away the grease form all the threaded holes.



Tools used

6mm Allen socket and ratchet

A screw driver

Vice with soft jaws

3/8 drive torque wrench

Labour time (Sigma drive removed from vessel)

To disassemble, clean and re-grease and then re-assemble the sigma drive: 1 hour

To polish out the touch condition from the main corp and central sphere: 1 hour

Expertise level required for this job

I would rate this as a basic < medium job with no specialist knowledge or training required.

Installation

Sigma drive runs smoothly without any play
Please note: I have not fitted the correct bolts
into the clamp unit. These will be fitted after
initial testing.

